

INDUSTRY NEWS › HEALTH CARE

New Stanford Hospital is coming together in Palo Alto

By Leia Parker, Managing Editor
Silicon Valley Business Journal
Jul 19, 2016, 6:54pm PDT

Stanford Health Care's builders have completed 75 percent of the construction on its new Stanford Hospital facility in Palo Alto, which it plans to open in 2018.

When finished, the 824,000-square-foot, seven-story hospital addition will include 368 private patient rooms with sweeping views of the foothills, a new emergency department nearly twice as large as the existing department, and

a 4.2-acre rooftop garden, said a spokesperson for the new hospital.

The new hospital has exterior glass panels on the patient pavilions, which give the effect of floating in the air. Construction crews this summer will place the signature glass dome in the atrium, which will be the heart of the new hospital, the spokesperson said.

The new hospital adds on to the current Stanford

Hospital and will connect to it via a pedestrian bridge and underground tunnel, the spokesperson said.

The new hospital facility was designed by internationally recognized firm Rafael Viñoly Architects in association with Lee, Burkhart, Liu, Inc.

The general contractor is the Clark/McCarthy joint venture, the spokesperson said.



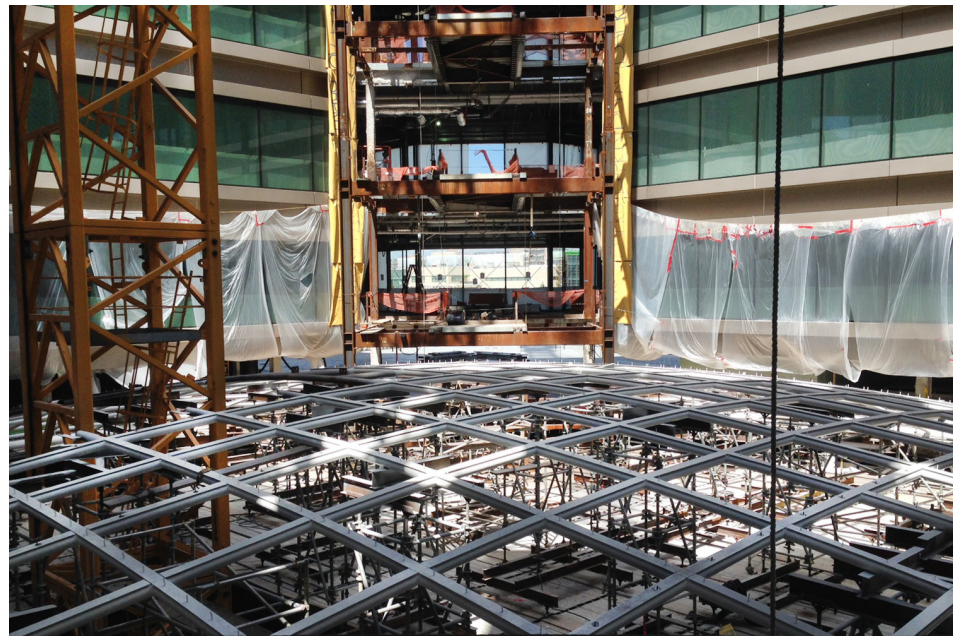
A rendering of how the new Stanford Hospital will look upon completion. It is scheduled to open in 2018. The new hospital addition will add 368 private rooms, state-of-the-art operating suites, expanded emergency services, and advanced technologies and streamlined services.



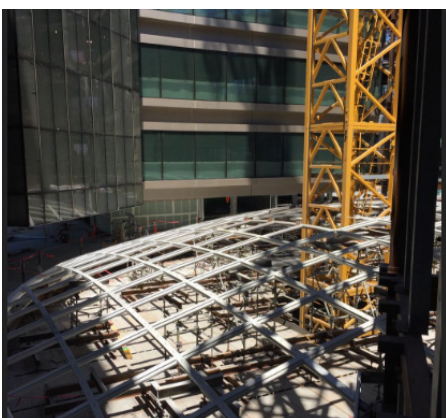
The oversized double-glass wall, which runs from patient levels four through seven, will allow future patients sweeping views of the foothills and surrounding Stanford campus. The clear-vision glass windows include an energy-efficient intelligent shading system with motorized blinds that offers a more sustainable way to control climate inside the hospital.



The atrium will serve as the main entrance point for patients and visitors to the new hospital. This glass dome will provide natural light from above. It is designed to deliver a calming atmosphere.



Work is under way to install 404 glass panels on one of the key architectural elements in the new structure—the glass dome in the atrium.



Another view of work under way on the atrium dome.



A rendering of how the atrium dome will look after the 404 glass panels are installed.

IMAGES COURTESY OF STANFORD HEALTH CARE